



Dear People Of My Planet

I am Gaia, your sister, your friend, your partner and your planet.

I want to speak to you for a moment from my Heart Chakra in Maui, Hawaii. The sweet Essence of my Love flows across this verdant land with the ever-present trade winds and soaks into my earth with the misty rain.

Each of the myriad flowers speaks of my great creative force, and the warm weather allows my people the freedom to play in my waters and on my shores. Because of the beauty and harmony of my Heart, many people have sought to own my land, my oceans, and my beaches, but I AM FREE, for I am a FEMALE that NO man—or woman—can own.

I am free because I am connected to my SELF and to my Mission. With the wonderful gift of increased feminine energy sent to my heart in Maui from my sisters in the Pleiades, my Female Power is awakening after a long slumber. Consequently, I am now fully prepared to see as many of my inhabitants as possible into the fifth dimension and beyond.

Furthermore, between now and 2012, dear Venus rests between my planet, Earth, and our Sun to further amplify the Feminine Power of Creation and Birth. I do not expect that our journey will be completed by 2012, but I believe that our journey will then be clearly evident.

I know there are those who do not want to move into the higher vibrations, but I can look into their hearts and see their Soul's desire, which they are unable to do. Still, Earth has always been a free-will planet, and all of my people have the right to create their reality, whether it is from their Soul or from their ego. As the majority of my people choose to partake in our impending process of Planetary Transformation, these "sleeping ones" will find that they are more and more alone.

OUR OVERSOUL

I, Gaia, the eighth Pleiadian Sister, am more rambunctious, shall we say, than my sisters. I always felt as though there was a great challenge, a mission, which my Oversoul wished me to fulfill. That Mission was to go out into the wastelands, the outer reaches of a new Galaxy, to experience the most extreme third dimensional polarity that was possible. To join me in this endeavor were most of the other members of my Oversoul. We all looked forward to choosing our own role. I, Gaia, am the expression of the entire Oversoul, while the other members of my Oversoul chose to be different expressions of me, the planet.

In this manner, each of "us" is our own interpretation of "Being a Planet," and I, Gaia, serve as the template. Just as your hands and feet are portions of your human body, each of my elements and inhabitants, including my people, are portions of my planetary body. Some members of my Oversoul wanted to experience being first and second dimensional life forms. They were the first to send down a portion of their Essence into my initial 3D Matrix. I say "a portion of their Essence," as they, as well as ALL my life forms, also exist in many other places and dimensions. The ones who desired the experience of being first and second dimensional were to become my rocks, water, plants, reptiles, insects and animals.

The First and Second Dimensionals may seem less evolved to you, but they chose this expression because they knew that they would never lose touch with the Planetary Consciousness. They've never had the full experience of separation and limitation of third dimensional individuality, but they've never taken the risk of becoming lost in the polarity of their dark side. Instead, they remained in their group Soul. Because of this, they've never experienced death.

When they "died," they merely returned to the Oneness, with which they had

never lost contact. Most of my humans have lost their connection with our Oversoul and with their Multidimensional SELF. Therefore, “death” feels like leaving. When the connection has not been lost, “death” feels like going Home to visit your Family.

There were others, such as yourselves, who chose to be third dimensional “people.” Some first entered during the time of Lemuria, some during the time of Atlantis, some long before and some more recently within this last 12000 year cycle. Because you, my third dimensional inhabitants, wished the experience of individuality, you joined the 3D Game, which was prepared for you by the First and Second Dimensionals.

When you entered this Game of 3D polarity, your awareness was limited to the separate package of your personal earth vessel and you were separated from your Planetary Consciousness and the awareness of your Oversoul. At first, you, my people, had more of a connection to me, the planet. However, as you have become more individuated by your “civilized” world, most of you have lost that connection.

RECONNECTING WITH OVERSOUL

Each dimension of reality encompasses the lower ones. Therefore, you, my Third Dimensionals, were always aware of the First and Second Dimensionals but lost connection with the Fourth Dimensionals and beyond. Fortunately, many of you are progressing to “End Game” of the 3D Game. You have made this progression because you have learned to expand your consciousness beyond the confines of your separate 3D earth vessel. Because of your expanded consciousness, you are remembering to consciously perceive realities that are below, or above, the third dimension.

When you are able to expand your consciousness to encompass the seventh dimension, you will reconnect with your Oversoul, and realize that you have returned HOME. In fact, this “Journey Home” has already begun. YOU, my dear members of the Planetary Ascension Team, are NOW in the process of returning to your true, Multidimensional Awareness. Just as I, Gaia, have many dimensional beings and realities within my planetary body, you are realizing that you have many dimensional beings and realities within your personal body.

The first, second and fourth dimensional components of your SELF connect you to your Planetary Consciousness. Your fifth and sixth dimensional components connect you to your Galactic Consciousness, and the seventh dimensional components of your SELF will connect you to your Universal, or Cosmic, Consciousness.

ELEMENTALS

Embedded in your earth vessel are all the components of me, the planet, as well as all the components of OUR Oversoul members who chose to be first, second and fourth dimensional Beings. Your first and second dimensional selves live in unity with the planet, as these elements of your body, and mine, are not “evolved” enough to understand the separation of the third dimension. It is from their unity that they commune in oneness with the fourth dimensional creatures, my *Elementals of Earth, Air, Fire, and Water*.

Just as some of our Oversoul chose to be First and Second Dimensionals, some chose to be Fourth Dimensionals. Unlike the First and Second Dimensionals, the Fourth Dimensionals have some sense of individuality, but they also have a strong Unity Consciousness, which keeps them in constant communication with each other, as well as with all the lower dimensional beings.

The Fourth Dimensionals that most directly interface with your everyday life are the Elementals. The first and second dimensional “elements” of earth, air, fire, and water are given “life” by the spirit/prana of the fourth dimensional Elementals. The Elementals share their life-giving Spirit Essence with these elements, just as your Soul shares its Spirit Essence with your third dimensional earth vessel.

You, the human expression of our Oversoul, have Elementals within your physical body, just as my planetary body does. You are the microcosm of me, Gaia. In your carbon-based matter, “earth element,” you have the Earth Elementals, the Gnomes. In your bodily fluid, “water element,” you have the Water Elementals, the Undines. In the “space” and oxygen within your body, your “air element,” you have the Air Elementals, the Sylphs. Finally, in your neural activity and Kundalini force, “fire element,” you have the Fire Elementals, the Salamanders.

Since Elementals are fourth dimensional beings, they do not abide by the rules of third dimensional separation. Every experience that any Elemental has is instantly shared with all the Elementals. In fact, all four groups of Elementals, inside and outside your earth vessel, work in concert with each other. Within the INNER reality of your “personal” earth vessel, your thoughts and emotions stimulate all the Elementals, who in turn, stimulate all the Elementals in your OUTER reality. In this manner, the Elementals within your physical body and aura live in constant unity with the Elementals in my planetary body and atmosphere.

FIRE ELEMENTALS – SALAMANDERS

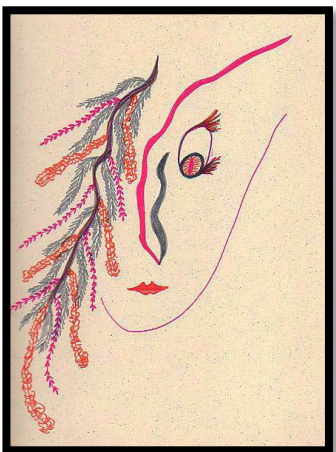


It is through your Elementals that you, my people, impact the planet, the weather, and all the people, plants and animals that you contact. For example, your thoughts are the end result of the neural activity that your inner Fire Elementals, the Salamanders, initiated and completed. Since your inner Fire Elementals work in concert with all the Fire Elementals of my planet, your “individual” thoughts become “planetary” thoughts via the unity in which all the Elementals live. Therefore, your thoughts influence all the Fire Elements of my planet and all my creatures.

Hence, when your thoughts are clear and kind, your inner Elementals attract other Elementals who are also clear and kind. When you choose positive thinking, you influence your Fire Elementals in a positive manner, which, in turn, positively influence the Fire Elementals of others and of my planet. The photons of the sun, which unify with my Fire Elementals, can more easily integrate into my planet by your passage, and the thoughts of others will be calmed as your inner Elementals share a serene blessing with their inner Elementals.

On the other hand, if your inner thoughts are sad, angry or fearful, you dispense your own angst and discomfort throughout your environment. You then magnetize others who are suffering, or create a “bad feeling” in others. Plants won’t grow for you, animals will run away or attack, and you will contribute to my weather in a destructive manner. My weather is a response to my occupants, as I am the sum/total of ALL my creatures.

EARTH ELEMENTALS – GNOMES



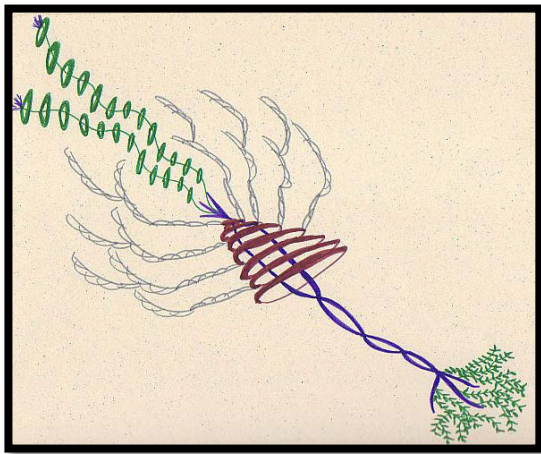
Your thoughts are actually a cooperative event between your Earth Elementals that work with the matter of the neurotransmitters, enzymes and other chemicals to create the change in polarity that initiates the electrical signal, and the Fire Elementals that “fire” the neuron. Hence, your thoughts also have a great influence on the Earth Elementals of your internal and external world. When your thoughts are chaotic, obsessive and/or confused, your Earth Elementals find it difficult to stabilize themselves. This “personal”

instability then influences the Planetary Earth Elementals to perpetuate geological instability.

As you walk my planetary body, Earth, your every step influences the Earth Elementals of my planetary body. The planetary Earth Elementals hold the message that your step has sent and relay it on to the next person or animal that walks in your footsteps. Have you ever wondered why it is so glorious to walk in the wilderness, on a deserted beach or in virgin snow? It is because it is psychically “quiet,” and your Elementals are not resonating to others. Hence, it is easier for them to resonate to your SELF.

This experience is also the origin of the saying, “Walk in the footsteps of the Masters.” The “Masters” are beings, human and non-human, who have gained a mastery over their thoughts and feelings, and, hence, a mastery of their inner elements and Elementals. These Masters consciously work with their personal and planetary Elementals, as well as the inner elements of others to convey the deep, inner peace of living in Constant Communication with your Multidimensional SELF.

AIR ELEMENTALS – SYLPHS



The Air Elementals assist the flow of life-giving oxygen, which gives you consciousness. The first thing that happens when you suffer from oxygen deprivation is that your thinking becomes increasingly confused until you become “unconscious.” Hence, an adequate flow of oxygen throughout your system is vital for clear thinking. This is why the element of air is also associated with your thoughts. The Air Elementals, the Sylphs, assist you in breathing.

The Sylphs, Air Elementals, also blend your thoughts with the thoughts of others through the Unity Consciousness that all Elementals share. With every inhalation you are receiving the thoughts of others, and with every exhalation, you are distributing your thoughts throughout your world via your Air Elementals. Your thoughts then feed into the Collective Consciousness and the Planetary Consciousness to influence your daily experiences, as well as the experiences of others.

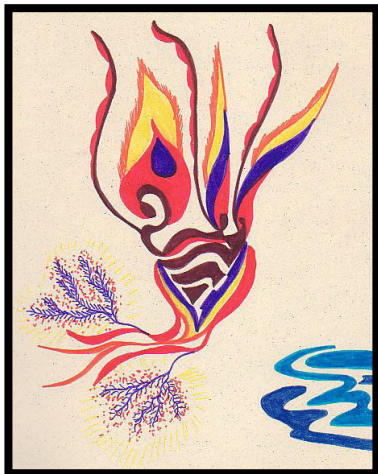
Allow me to take a moment to differentiate Collective and Planetary Consciousness for you. Collective Consciousness is the combined consciousness of all my humans, whereas Planetary Consciousness is the combined consciousness of ALL my inhabitants in ALL my dimensions. Hence, Planetary Consciousness is more expansive than humanity's Collective Consciousness.

The Sylphs live in your aura and constantly contribute to my aura, the atmosphere, and the quality of my planet's air and sky. When you have "cloudy thoughts," you relay that message to the atmosphere. On the other hand, when you have "clear thinking," you contribute to a clear day. You are all aware of how my weather is changing. This is because we, our planet, are now largely fourth dimensional. Therefore, reality is more mutable and more easily influenced by the thoughts and feelings of my inhabitants.

Please do not be frightened by this statement, for it also offers great hope. As each of you, my Keepers of the Land, gain mastery of your own inner elements, your inner Elementals will assist you in holding that resonance of mastery. The Elementals also serve to contribute that "resonance of mastery" to the inner Elementals of others and to the Elementals of my planet. In this manner, the Elementals serve to raise the vibration of "their person," while they also raise the vibration of my planet and all my inhabitants.

The mastery you gain over the physical elements of your earth vessel allows you to move into an active partnership with your inner Elementals, as well as the Elementals of my planet. You have the innate power to call upon your inner Elementals to assist you with your personal health and transformation, as well as the health and transformation of my planet. Do you realize now what a truly powerful Being you are?

WATER ELEMENTALS – UNDINES



Water has been associated with emotions just as air has been associated with thoughts. Your Water Elementals, the Undines, rule you're your bodily fluid, blood, and the circulation of your blood, which is the domain of your heart. If your heart does not function, you die. Hence, if your heart is not functioning well you experience the emotion of fear, Fear of Death.

Conversely, the emotion of love is also associated with your heart. This is likely because your heart is

also the Home of your Soul/SELF from whence Unconditional Love can be felt. Since all emotions are some octave of the 3D polarization of “good/loving” emotions or the “bad/fearful” emotions, your Heart and your Undines, Water Elements, serve as the distributors of your emotions.

Your emotions are the basis of your consciousness for they represent your ability to FEEL, be aware of, your Self. When you were first born, your “self” was your Soul/SELF. Then, as a process of “growing up,” you became more and more aware of your physical body and your ego that ruled it. Eventually, your “self” became your ego/self.

Fortunately, as you expanded your consciousness, you could FEEL, be aware of, your inner Guides, Holy Spirit, Angels, and other members of your inner world. Eventually, as you continued on your Path, you began to be “conscious” of your own Higher Self, whom you have downloaded and are now integrating into your physical earth vessel.

Your cerebral spinal fluid is also a water element, and hence, under the domain of your Water Elementals, the Undines. Cerebral Spinal Fluid flows between your brain and your skull, through the ventricles of your brain, and up and down your spine between the nerves and the spinal cord to cushion your nerves and facilitate your primary neural synapses.

THE MYSTICAL MARRIAGE

As you Awaken, the Goddess Kundalini, also known as the Goddess Shakti in the Eastern World, sweeps up from your Root Chakra, chakra by chakra, to join her Divine Complement, Lord Shiva, in your Crown Chakra. This Mystical Marriage of your inner male and female not only initiates the process wherein you are freed of the polarities of the 3D Game, but also greatly amplifies the frequency rate of your cerebral spinal fluid and potential voltage of your entire nervous system.

When Goddess Kundalini rises up to your Brow, Sixth, Chakra, she leaves her “seed of transformation” in the third and fourth ventricle of your brain. Lord Shiva, who has been awaiting his Divine Mate in the Crown, Seventh, Chakra, then extends his energy into your third and fourth ventricle to fertilize the “eggs” which his mate has left for him. Their coupling opens your Third Eye, initiates the gestational period of your total transformation and activates the octave leap in the voltage of your cerebral spinal fluid.

This jolt of higher frequency travels throughout your entire brain and down your

spinal cord via your cerebral spinal fluid. Your cerebral spinal fluid, now charged with a higher vibration, basks every nerve ending in your brain and spinal cord. Your spinal cord then shares the shift in frequency with the nerves that leave your spinal column to innervate your entire body. As the vibratory rate of your physical body rises, so does your ability for greater expansion of your consciousness. As the anchor is raised, the ship can begin its journey.

You, my people, have begun your journey and are lovingly assisting others to begin theirs. I wish to thank you for delaying your total transformation into Lightbody until the moment of the NOW in which my entire planet and all my inhabitants shall return Home to our true SELF. In preparation for that moment, I wish to lead you in communing with your fellow members of our Oversoul, the fourth dimensional Elementals who, in turn, will share your message with your first and second dimensional elements to heal and transform your current earth vessel. Your Elementals will then, also, communicate with the Elementals of my planet and all my inhabitants.

COMMUNING WITH THE ELEMENTALS



Communing with your inner Elementals is an important step towards becoming the Master of Energy that is your birthright. As you work in conscious partnership with the Elemental Kingdom of your human body, you shall also be working in conscious partnership with the Elemental Kingdom of my planetary body. We shall begin the process with your inner Fire Elementals.

SALAMANDERS

Take a long, slow, deep breath and FEEL the Salamanders, Fire Elementals, moving like little jolts of lightning throughout your body. Experience the flash of each synapse within your system as you see the Salamanders busily at work within your body. Feel your inner Fire. Call upon your Salamanders to update your electrical circuitry to accept and integrate the higher frequencies that are entering your vessel.

Remember a time when you were “out of control” of your inner fire. In your mind’s eye, re-visit this situation by closing your eyes and calling upon your inner Fire Elementals to calm your excitation and ease your struggle. They may

be quite surprised that you even know of their great contribution to your life. Nonetheless, they quickly respond to your request.

Thank them now for their service, and through them, thank all the Fire Elementals of my planet. Determine that you will continue to seek to regain your birthright of being a Master of Energy, so that you can spread that Mastery to ALL through your inner Elementals.

GNOMES

Now, inhale deeply the Essence of these Fire Elementals and slowly exhale into their partners, the Earth Elementals, the Gnomes. Imagine these Gnomes doing construction and re-construction of your physical body.

Scan your body for any areas of pain or discomfort, and consciously call the Gnomes to assist you in healing this area. They, too, may be surprised at first to realize that you know of them, but they then rush to follow your request.

Thank your inner Earth Elementals for all that they do for you, and through them, thank all the Earth Elementals of my planet. As you cooperate with your inner Earth Elementals to create greater personal stability, you are also contributing to greater planetary stability.

SYLPHS

Breathe now into the “space” of your body, the places “in-between,” that appear empty, yet are full of potential. Call upon your inner Air Elementals, the Sylphs, to cleanse these spaces, as well as all the oxygen in your body. With the clarity of body, feel how your clarity of mind increases.

Thank your Air Elementals for all that they have done for you, and through them, thank all the Sylphs of my planet. With your every exhalation, be conscious of the thoughts that you sending out before you. Also, with every inhalation be aware of the thoughts of others. You are not alone, except in your 3D illusions.

Feel how the Air Elementals spread Unity of Thought throughout my entire planet. Determine to be aware of the thoughts that you contribute to the Collective Consciousness, as you thank your inner Sylphs for their great service to you and to the planet.

UNDINES

Take a moment now, to emotionally connect with your inner Water Elementals, the Undines. Feel these Undines as they beat with your heart and flow with your blood. Feel how they cooperate with the Air Elementals, the Sylphs, to carry life giving oxygen throughout your system. Experience the Flow of your Water Elementals. They neither work nor toil. They simply ARE.

Call upon your Undines to teach you the art of “living in the Flow,” as you thank them for their contribution to your well-being. As you feel the Flow inside of you, you spread the steady sense of calm awareness to your outer world through the unity of all Elementals.

Sense how your inner Undines facilitate the Flow of Communication and Cooperation between your inner Elementals, who then unite your inner elements of earth, air, fire and water, within the “society” of your physical earth vessel. YOU are the Captain of this vessel, and YOU have the power and the responsibility of that position. Your inner alliance, or discord, will now be projected out into your outer world via the Unity Consciousness of all Elementals. Be aware of what you are projecting, for others surely will be!

GAINING MASTERY

You can only gain mastery over that which you are consciously aware. With attention and recognition, your Elementals can function in greater harmony with you and with each other. Once you have achieved conscious, multidimensional teamwork within yourself, you then initiate that spirit of co-operation with your outer world by your mere presence. The sun will shine above your head, the waters will calm with your passage, the earth will bloom with each footfall, and the skies will shine above you.



Yes, dear people of my planet, that is the grandeur that you expressed when you first walked my body, and the grandeur you will regain at the time of our Planetary Ascension. We shall CREATE that moment TOGETHER, Person, Planet, and, of course, our dear Keepers of the Water, the Cetaceans.

Arise My Ones, Our New DAY Has Begun
Your Earth Mother, Gaia



Welcome, We are the Elementals

THE ELEMENTALS SPEAK:

"Welcome, how do you do? We, the elementals, are members of the fourth and fifth dimension. We welcome you to our world. Come, we will show you around. As you journey up the various sub-planes of our Home, you may realize that our residents differ. Just as the residents of the deep ocean differ as the infusion of light into their world changes, so do we differ as there is more and more light and less and less darkness, or matter.

"Our lowest plane, the Lower Astral Plane, is our junkyard. This is where everyone from Earth has dumped his or her fear, anger, sorrow and pain. We try to work with it, but it is not ours to clear. The third dimensionals have created the Lower Astral Plane and it is they who must clean it up.



We hope that you did not have too much trouble there. But if it is your first time through, you probably did. Eventually, you will create your Path through the Lower Astral Plane, and in fact, all the way up to the Fifth Dimension.

"The key to visiting our Kingdom is that you release your fear. There is much fear in your third dimensional world, which holds you captive in your land of illusion and work. What you call illusion we call imagination or creativity, and what you call work we call service.

"We do not have any illusions here because we know that everything changes with our thoughts and feelings. If we think like an owl, we become an owl. If we feel beautiful, we may look like a flower and if we are feeling powerful, we may look like a unicorn.

"Yes, all of your "mythical" creatures are alive and very real here. If you wish to see one, then just think of it and it will be around the next bend, or it may suddenly appear. Our world is much like your dreams. In fact, this is where you come in your night body.

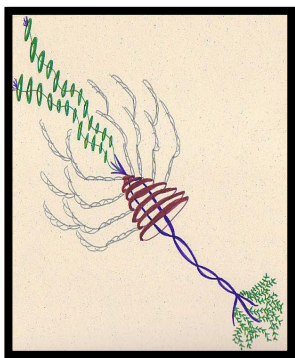
"A predictive or spiritual dream would be your night body's visit to the higher planes of our world, and a nightmare would be a trip to the Lower Astral Plane. We learned early on that if we allow fear to overtake our being, we too would be pulled into that dark place. Therefore, we focus on the many joyous events about us.



"Please follow and we will show you a new flower that is about to give birth. Our flowers here may be a bit different than the flowers in your Kingdom, but some of them are the same. In fact, some of our most treasured flowers are known as weeds in your world.

"Watch closely now, the young bud is about to open—AH is that not the most glorious sight? Look, it is sending a drop of its essence down into your world. Perhaps you will see it when you return home.

"We do that a lot you know, send down portions of our essence to your world. In fact, if you look very closely, and with blurred vision, you may even see us elementals wavering in your atmosphere. We greatly love to be in gardens, streams and under huge trees. Allow me now to introduce you to some of my friends."



"We are sylph. We may look like only one being to you, but we are all joined in consciousness and do not perceive ourselves as being individuals as you humans do. Our essence rules the air element of your third dimensional world and body. We fourth/fifth dimensionals continually change our forms.

"We waver in the wind like feathers. We serve your world by clearing your air and atmosphere. We often have to express the negative thoughts of humanity in the form of hurricanes or cyclones. We do not wish to hurt any of you. We are only following our assignment, which is to assist humanity in seeing the power of thought.

"Allow me to introduce you to some of our fairies. They are also sylphs because

they serve in the air. They are the ones who assisted that beautiful flower in opening."



"Hello human. We are faerie. Some of us live in the Land of Faerie, but many of us also live here in the lower vibrations of the Astral Plane. It is here that we learn about being "changers". A changer is one who assists the seasons in changing. We assist the old leaves to fall from the tree in the fall and the new buds to open in the spring.

"Thank you for visiting us. Will you remember to look for our kind when you see a lovely garden? Perhaps you will recognize us. We know we will recognize you. Oh, I must return to my flowers. Sylph will continue to guide you. Bye, bye."

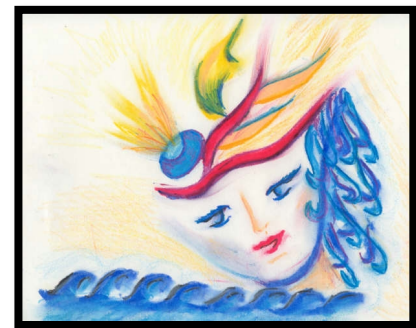
"Thank you faerie. I am sure that this human appreciates you as much as we do. Oh, dear human, do you see that clear stream ahead? Let us go there and we will introduce you to the undines of the water element. See how busily they work to keep the stream moving.



"We sylphs often serve with the undines to create rain. In this way, our gardens and forests can flourish. The undine's essence rules the water element in your third dimensional bodies, as well. Just as thoughts are like air, emotions are like water. There is as much water on your third dimensional Earth, as there is here in the Astral Plane. Therefore, there is also much emotion.

"Here the denser emotions, such as fear, anger, and sorrow, sink into the Lower Astral Plane. This allows us a boundary between the pain of darkness and the purity of light. In your world, on the other hand, the pain and purity are intermingled and often difficult to identify.

"The *undines* can assist you in differentiating your emotions if you ask for their help. They work directly with the physical body to create uncomfortable feelings for pain and darkness and glorious feelings for light and love.



"Oh look, there are some gnomes who are carrying the damp soil from the streams over to the baby flowers. They care for our infant plants and animals

here much like you care for your human infants.

"The gnomes serve as earth elementals. See over there, by that big crystal. If you look closely, you will see a gnome peaking up from under the earth to tend it. And over to your right, there is an elf that is caring for to a small faun.



"Can you now realize how we elementals work together to create our harmonious environment? Only humans who can focus on love can visit us here. Hence, we do not have to out-picture your emotions in the form of storms and natural disasters as we do on earth.



"Do you feel our wonderful sunny day? You can thank the salamanders for that. They rule the fire element. Without the fire elementals, you would not receive the photons from the sun, have fire to warm your homes and cook you meals, and your bodies would not have neuron synapses.

"We earth, water, and air elements deeply appreciate the salamander fire elementals as they carry Spirit to our world, into our very essence.

"Now we are approaching one of the Mystery Schools. The Ascended Masters, your ascended humans, each have a Mystery School on the etheric plane so that you can more easily access them in your expanded consciousness. Some of your more evolved humans can even bi-locate to these schools and study directly with the Masters.



"The Masters have a higher octave of their schools on each of the sub-planes of our fourth dimensional world. We have come to the boundary of our territory. St. Germain, the Ascended Master of the Seventh Ray will be your guide now."

ST. GERMAINE SPEAKS"

"Greetings. I am joyous to find you here in the inner planes.

I, the Ascended Master for the Seventh Ray, am your guide. Allow me to congratulate you on your ability to make this trek. I know that you have faced many of your personal demons to allow you this pleasure.

"We are still in the Astral Plane, or Emotional sub-plane of the fourth dimension. It is here that many of the Angels serve. We Ascended Masters are very grateful for the ministrations that the Angels have given to humanity.



"Without their assistance, we doubt that any of us would have been able to make our transcendence into the Light. It is also the selfless example of the Angelic Kingdom that has inspired us to forgo our further aspirations into the Light in order to serve in the Fourth Dimension and assist our brother and sister humans.

"I, **St. Germain**, work with the Angels to transmute the darkness of the Third Dimension into Light. **Ascended Master Nanda** works with the feeling of bliss that the *Angelic Choirs* radiate onto the many places of worship, whether they are a personal garden or bedroom, a high mountain peak or sacred grove, or a beautiful man-made cathedral.

"**Ascended Master Hilarion** often calls upon the Angelic Kingdom to bestow upon humanity the feeling of TRUTH to amplify healing and scientific discovery, and **Ascended Master Lord Lanto** calls upon the Angels to shed their Divine Illumination upon fortunate human recipients.

"Of course, **Ascended Master Serapis Bey** calls upon the Angels to assist with human ascension. **Ascended Master Paul the Venetian** works continuously with their love force. Also, **Ascended Master El Morya** works directly with the angelic leader, *Archangel Michael*, and his powerful Divine Complement, *Lady Faith*.

"But enough of my human talk, allow me to introduce you to this glowing angel who now stands before us."

Hello, beloved human. I am joyous that you have journeyed into the Higher Planes where I serve. We Angels also have a group consciousness in that we are in constant inner communication with each other and with the Archail of the Ray on which we serve.



"However, since we serve so intimately with humans, some of your individuality has rubbed off on us, so to speak. As you know, we absorb the essence of our environment. One of our biggest challenges is to enter your world with our absorbed love and compassion and not allow the fear, anger, and psychic pain of your world to taint our gift.

"We are grateful for the appreciation that many of you humans have been showing us. We truly appreciate when our likeness has been drawn by your artists, our music is received by your musicians and composers, our words are



written by your writers and poets, and our movement is grounded by your dancers and athletes. We wish you to know that with every stroke of the brush or pen, with every note of music, and with every movement, we are beside you celebrating your expression of our gifts.

"We give our offerings freely and in Unconditional Love. We realize the many hardships you endure, especially the hardship of feeling separate from the Oneness. Some of us have chosen to take a physical life, but we seldom do it twice. Our hearts are best suited for Unity and Loving service to God-Goddess-All That Is.

"For that reason, we serve here in the Higher Planes to assist you in clearing your emotions so that you can better receive and ground our offerings. We greatly admire the courage you all display as you live and contribute in a world so filled with separation and limitations. Would you allow me to touch your heart in appreciation of your great accomplishments?

"Oh thank you, dear human! You may not realize it, but we angels find humans to be as beautiful and loving as you humans find us. We each serve the Source in our own way. Together we are striving now to raise our dear Gaia into her true fifth dimensional form. We are a good team, humans and Angels. Yes, indeed we are.

"Oh dear, here we are already at the threshold of the Mental Plane. I believe it was the blending of our auras that brought us here so quickly. Before you cross over to enter into your mental body, please take a moment to see and feel your astral-emotional body. It is a lovely oscillating, dynamic body, is it not?



“Within your astral body is the sum total of all the emotions and feelings that you have ever experienced in all of your third and fourth dimensional incarnations. When you merge with your Astral Body, it is good to call upon an angel, such as myself, to “touch” your heart so that we may heal your darkness and amplify your light. As you carry more and more light, your third dimensional aura will glow and your inner beauty and love will radiate to all those who come into your life.



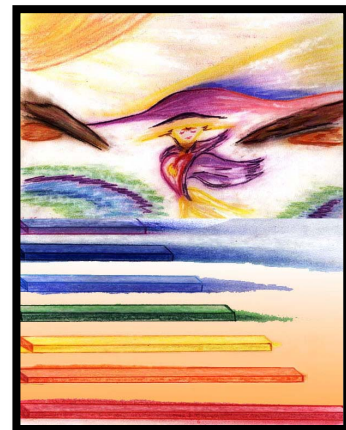
“My, it is time for you to step over into the Mental Plane, but before you leave, would you like to change form? Perhaps you would like to be a wolf or a hawk or a snake. Would you like to burrow into the ground, run as fast as a wild stallion, or fly like a bird? Possibly you would like to be twelve feet tall or as small as the elves and faeries

in this world. In fact, upon this threshold is the wonderful Land of Faerie. See. It is just through that waterfall. You may travel there whenever you wish.

“But now, I see a deva who has come to greet you. Yes, it is a water deva who has come to assist you in the final clearing of your emotions so that you may step into the Mental Plane. Be prepared dear human, the next land has much less form.”

“Welcome, human. We are Deva. We too have a group consciousness. Our consciousness is in unity with all the other Devas as well as all the elementals that serve with us to create form from thought. In our world, form and thought are one. When we are thinking about something it takes a form, but when it leaves our thoughts, it loses all form. That is the way of our Mental Plane.

“Here, thought is pure potential. It is our responsibility to receive Divine Will, which is each and every thought from Source, and to create a matrix for it here on the Mental Plane. Then we send that matrix to the Astral Plane to be filled with emotion—energy in motion. The Divine Will is then passed into the Etheric Plane where the elementals feed the infant Divine Idea with their etheric substance.



“At this point, the etheric body of a human who resonates to that idea will be able to carry it over into the third dimension. Your etheric body holds all the knowledge, pain and experience of all of your third dimensional lives. The Divine Ideas that will attract your etheric body are

probably Ideas that you have worked on in many lives. Once the etheric body magnetizes a Divine Idea, it can more easily be passed into the consciousness of your physical body. Oh, what joy and jubilation we all feel when the seed of the ONE blooms upon the Physical Plane!



“Some of the humans are able to visit us here in the Mental Plane so that they may become aware of their Divine Idea. This awareness is obtained by merging with your own mental body. In your mental body is stored all the thoughts and beliefs of all of your third and fourth dimensional lives.

It is easier to absorb your personal Divine Ideas because you have believed in and thought about them for many, many incarnations. These thoughts and ideals leave a residue within your mental body, which acts like a magnet to attract concepts of that frequency and matrix.

“Take a moment now to look at your mental body. Do you see your own ‘thought matrix’ through your translucent form? Oh, be careful. If you allow yourself to feel frustration that you are not ‘doing it right’ you will lower your vibration and terminate our visit. Allow me to touch you and it will be easier for you...



“There, I am sure you can see your mental body now for you are glowing like a thousand candles. Take a moment and send an image of this glowing form to your earth-bound brain. Then *remember to remember* that image when you return to your third dimensional world. This is the best way to ground your light body in your physical form.

“Allow me now to invite you to one of our devic meetings. It is there that we gather up the inspirational thoughts of humanity, match them with the Divine Ideas of the Source, and send them back to the earth plane. Perhaps you will find out more about your own Divine Ideas....

“Well, well, we are joyous that you joined us in our meeting. Was it not a glorious experience for you? You did so well there that you have gained the attention of one of our Elohim. We will take you now to their Temple. Just close your eyes and allow your particular Divine Ideas to grow in wisdom and illumination and you shall find yourself there...”



“WELCOME cherished human, I AM Elohim. You have performed admirably in your mental expansion. You have cleared old beliefs in limitation and separation and learned to keep your thinking positive. These accomplishments have calibrated your consciousness to the frequency of the higher planes.

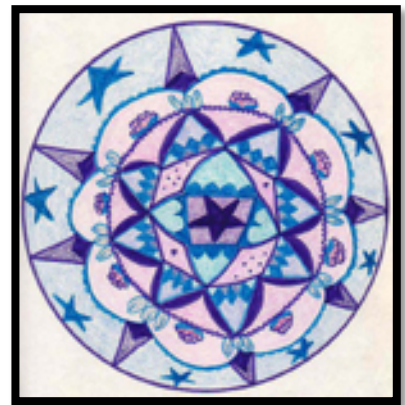
“Allow my ESSENCE to enter your mind. Just close your eyes and accept my message. Only you shall hear it, and only you can manifest it in you physical world...

“Oh yes, dear human, our blending has accelerated your resonance into the Causal Plane. Enjoy your journey. I believe your own Christ Consciousness has come to greet you.”

“Beloved One, essence of my SELF, I am our Christ Consciousness. I need no form, as I AM pure consciousness. I AM the sum total of all the loving feelings, thoughts, and actions of all our lives. I AM our Star Body, which changes and wavers with every thought and feeling. One day I AM golden and the next I AM violet. Often

“I will alternate from one color to another with each message I receive from my higher or my lower selves. Can you feel me within you? Allow me to touch your heart so that you can more easily “feel” my consciousness within you...

“Wonderful! Now take that “feeling” of our Christ Consciousness and infuse it in every one of our lower bodies as you make your return trek, through the Fourth Dimension, into your physical body. In fact, allow me to touch your Third Eye and we shall do that together now...



“Beautiful! Yes, you are still here because you are EVERYWHERE. In fact, you and I are everywhere that I AM for we are One. You are my physical encasement, my manifestation of our Divine Idea of an individual, human life. I AM the LOVE that brings joy to our human Heart, the consciousness that brings ILLUMINATION to our human Mind, and the CONNECTION of our human essence with our Divine SOUL.

“You are me and I AM you, and I AM ALWAYS in constant connection with our

"I AM PRESENCE". Our "I AM Presence" is at the threshold of the Fifth Dimension, in fact, it IS the threshold. Allow me to merge with you so that we may go together to that threshold...



"Thank you my beloved human; was it not glorious to be in Oneness again? We are here now, our "I AM Presence" is before us."

"GREETINGS, my beloved physical expression. I AM ALL THAT I AM. I AM our SELF. I AM our Higher Human. Take me Home with you into your physical world and I will take you Home with me into the Fifth Dimension!!!!"

